



*Are you looking to simplify the on-site installation process?*

*Do you want to minimize installation costs and save time?*

*Are you considering pre-assembled accessories for the rack?*

*Do you want to make sure you don't lose or break any material needed for the rack?*

## Conteg is introducing a new service called **READY RACK**

To increase efficiency, you can now order free-standing or wall-mount racks that come fully equipped with all the accessories you'll need.

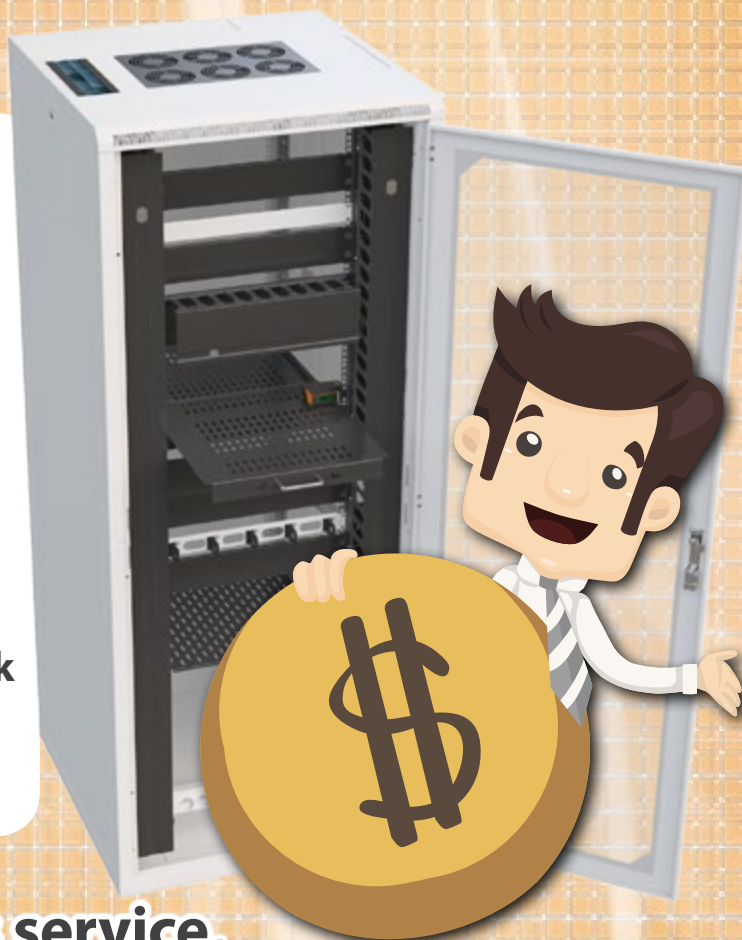
### Estimated time spent on on-site installation of rack accessories\*:

- cable entry with double brush protection = 5 min
  - vertical cable organizer 42U = 10 min
  - vertical 0U Power distribution unit = 15 min
  - ventilation unit installed in the rack roof = 20 min
  - heavy load shelf = 20 min
- (two people needed for this step)

**total = 1 hour 10 minutes for EVERY rack**

This includes setting rails in to the correct position and testing

\*Time spent on waste disposal is not included



**To learn more or order this service, please contact us at [conteg@conteg.com](mailto:conteg@conteg.com)**

**CONTEG**

[www.conteg.com](http://www.conteg.com)